



114 S. Washington St.  
Suite 301  
Easton, MD 21601  
443.385.0511  
info@shorerivers.org

Legend

- STREAMS
- FLOWPATHS
- SLOPE PERCENT
  - 0.001 - 15
  - 15.001 - 35
  - 35.001 - 55
  - 55.001 - 75
  - 75.001 - 99.309
- HEIGHT ABOVE CHANNEL METERS
  - Channel
  - 1L\_1.5m
  - 1\_Sto3m
  - 3to5m
  - gt\_5m
- Photo Locations
- Parcels

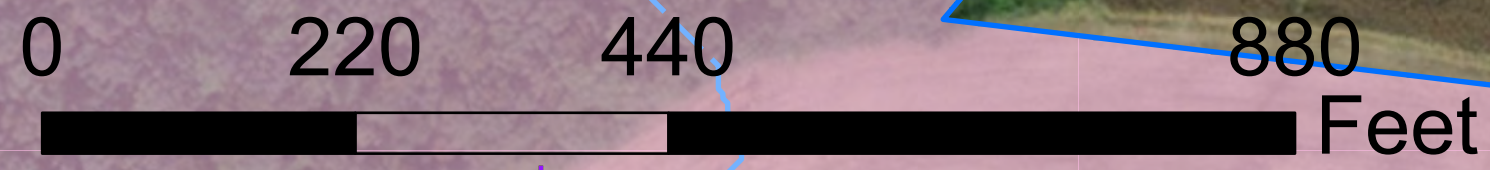
PROJECT	LENGTH (FT)	PROTOCOL	<90% DESIGN REDUCTION ESTIMATES		
			TN (LB)	TP (LB)	TSS (TONS)
BANK STABILIZATION	416	1, 5	713	647	1,179
FLOODPLAIN RECONNECTION AND CHANNEL REALIGNMENT OR STABILIZATION	974 (3 AC)	1,2,3			
FLOODPLAIN RECONNECTION	3366 (8.8 AC)	2,3			
<b>TOTAL</b>	<b>4,756</b>				

\*FIELD DOC STREAM RESTORATION PROTOCOLS. FINAL PROTOCOLS DETERMINED DURING DESIGN PHASE

FLOODPLAIN RECONNECTION

FLOODPLAIN RECONNECTION AND CHANNEL REALIGNMENT OR STABILIZATION

BANK STABILIZATION



ANALYZED  
TIMOTHY ROSEN 11/08/21

CHECKED  
----

DATE:  
1/20/2022



FLOODPLAIN RECONNECTION

BANK STABILIZATION

FLOODPLAIN RECONNECTION AND CHANNEL REALIGNMENT OR STABILIZATION



TULIP FOREST FARMING CORP



PROJECT	LENGTH (FT)	PROTOCOL*	<90% DESIGN REDUCTION ESTIMATES		
			TN (LB)	TP (LB)	TSS (TONS)
BANK STABILIZATION	2,930	1, 5	645	585	1,067
FLOODPLAIN RECONNECTION AND CHANNEL REALIGNMENT OR STABILIZATION	587 (2.8 AC)	1,2,3			
FLOODPLAIN RECONNECTION	785 (2.6 AC)	2,3			
<b>TOTAL</b>	<b>4,302</b>				

\*FIELD DOC STREAM RESTORATION PROTOCOLS. FINAL PROTOCOLS DETERMINED DURING DESIGN PHASE

TULIP FOREST FARMING CORP

BANK STABILIZATION



TULIP FOREST FARMING CORP  
STREAM RESTORATION 2

BAYSIDE CREEKS



114 S. Washington St.  
Suite 301  
Easton, MD 21601  
443.385.0511  
info@shorerivers.org

Legend

- STREAMS
- FLOWPATHS
- SLOPE PERCENT
  - 0.001 - 15
  - 15.001 - 35
  - 35.001 - 55
  - 55.001 - 75
  - 75.001 - 99.309
- HEIGHT ABOVE CHANNEL METERS
  - Channel
  - lt\_1.5m
  - l\_1to3m
  - 3to5m
  - gt\_5m
- Photo Locations
- Parcels

ANALYZED  
TIMOTHY ROSEN 11/08/21

CHECKED  
----

DATE:  
1/20/2022



FLOODPLAIN RECONNECTION



CHANNEL REALIGNMENT OR STABILIZATION AND POTENTIAL FLOODPLAIN RECONNECTION

TULIP FOREST FARMING CORP

BANK STABILIZATION

TULIP FOREST FARMING CORP



BANK STABILIZATION



PROJECT	LENGTH (FT)	PROTOCOL*	<90% DESIGN REDUCTION ESTIMATES		
			TN (LB)	TP (LB)	TSS (TONS)
BANK STABILIZATION	1,013	1, 5			
CHANNEL REALIGNMENT OR STABILIZATION AND POTENTIAL FLOODPLAIN RECONNECTION	1452 (0.86 AC)	1,2,3	453	410	749
FLOODPLAIN RECONNECTION	555 (1.82 AC)	2,3			
<b>TOTAL</b>	<b>3,020</b>				

\*FIELD DOC STREAM RESTORATION PROTOCOLS. FINAL PROTOCOLS DETERMINED DURING DESIGN PHASE



TULIP FOREST FARMING CORP  
STREAM RESTORATION 3

BAYSIDE CREEKS



114 S. Washington St.  
Suite 301  
Easton, MD 21601  
443.385.0511  
info@shorerivers.org

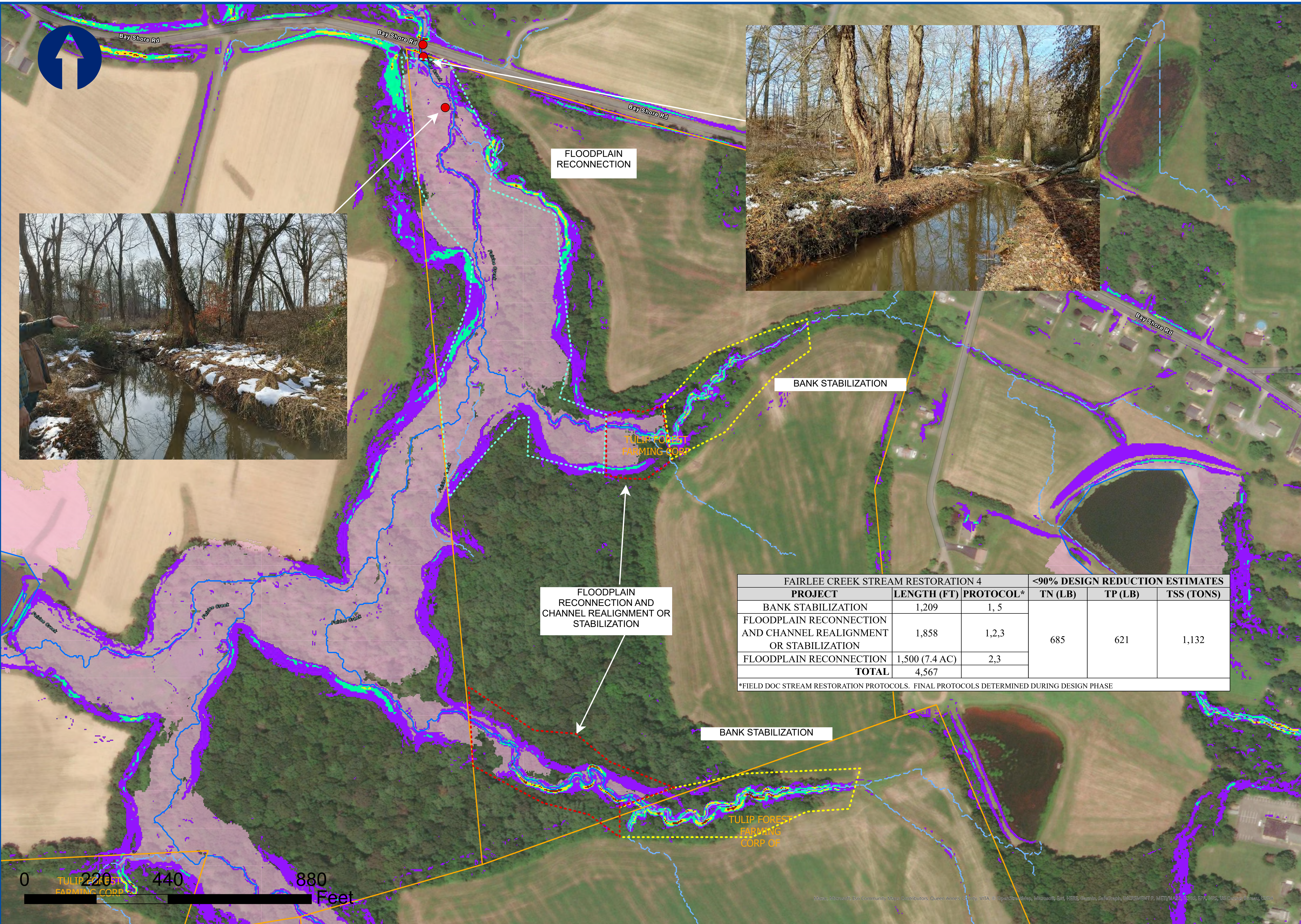
Legend

- STREAMS
- FLOWPATHS
- SLOPE PERCENT
  - 0.001 - 15
  - 15.001 - 35
  - 35.001 - 55
  - 55.001 - 75
  - 75.001 - 99.309
- HEIGHT ABOVE CHANNEL METERS
  - Channel
  - 1L\_1.5m
  - 1\_Sta3m
  - 3to5m
  - gt\_5m
- Parcels
- Photo Locations

ANALYZED  
TIMOTHY ROSEN 11/08/21

CHECKED  
----

DATE:  
1/20/2022



114 S. Washington St.  
Suite 301  
Easton, MD 21601  
443.385.0511  
info@shorerivers.org

**Legend**

- STREAMS
- FLOWPATHS

**SLOPE PERCENT**

- 0.001 - 15
- 15.001 - 35
- 35.001 - 55
- 55.001 - 75
- 75.001 - 99.309

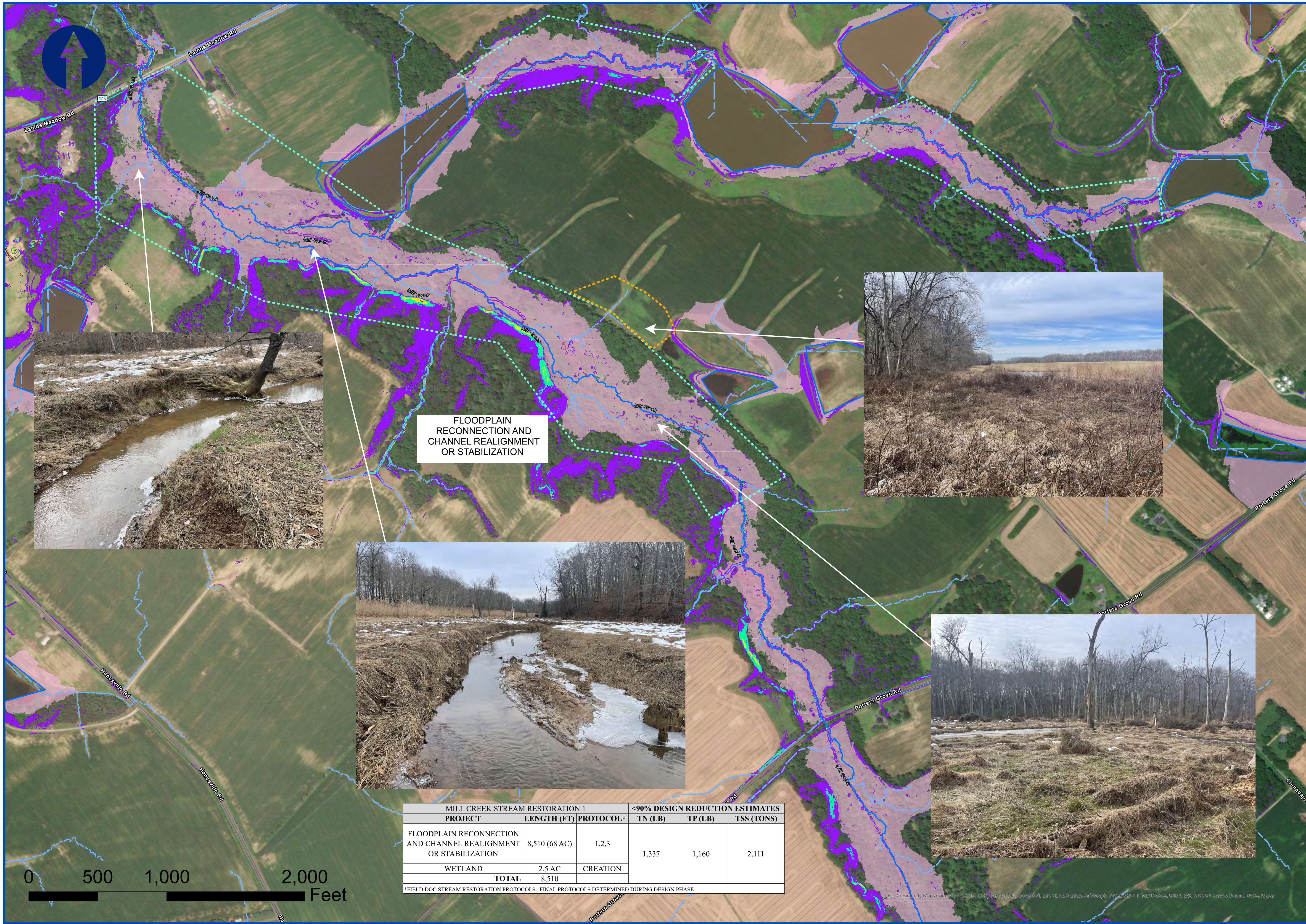
**HEIGHT ABOVE CHANNEL METERS**

- Channel
- IL\_1.5m
- I\_1.5to3m
- 3to5m
- gt\_5m

- Parcels
- Photo Locations

FAIRLEE CREEK STREAM RESTORATION 4			<90% DESIGN REDUCTION ESTIMATES		
PROJECT	LENGTH (FT)	PROTOCOL*	TN (LB)	TP (LB)	TSS (TONS)
BANK STABILIZATION	1,209	1, 5	685	621	1,132
FLOODPLAIN RECONNECTION AND CHANNEL REALIGNMENT OR STABILIZATION	1,858	1,2,3			
FLOODPLAIN RECONNECTION	1,500 (7.4 AC)	2,3			
<b>TOTAL</b>	<b>4,567</b>				

\*FIELD DOC STREAM RESTORATION PROTOCOLS. FINAL PROTOCOLS DETERMINED DURING DESIGN PHASE



FLOODPLAIN  
RECONNECTION AND  
CHANNEL REALIGNMENT  
OR STABILIZATION

MILL CREEK STREAM RESTORATION 1			<90% DESIGN REDUCTION ESTIMATES		
PROJECT	LENGTH (FT)	PROTOCOL*	TN (LB)	TP (LB)	TSS (TONS)
FLOODPLAIN RECONNECTION AND CHANNEL REALIGNMENT OR STABILIZATION	8,510 (68 AC)	1,2,3	1,337	1,160	2,111
WETLAND	2.5 AC	CREATION			
<b>TOTAL</b>	<b>8,510</b>				

\*FIELD DOC STREAM RESTORATION PROTOCOLS. FINAL PROTOCOLS DETERMINED DURING DESIGN PHASE



114 S. Washington St.  
Suite 301  
Easton, MD 21601  
443.385.0511  
info@shorerivers.org

- Legend**
- STREAMS
  - FLOWPATHS
  - PARCELS
- SLOPE PERCENT**
- 0.001 - 15
  - 15.001 - 35
  - 35.001 - 55
  - 55.001 - 75
  - 75.001 - 599.309
- HEIGHT ABOVE CHANNEL METERS**
- Channel
  - lt\_1\_5m
  - 1\_5to3m
  - 3to5m
  - gt\_5m

MILL CREEK STREAM RESTORATION

BAYSIDE CREEKS

ANALYZED  
TIMOTHY ROSEN 11/08/21

CHECKED  
----

DATE:  
1/25/2022



TIMS CREEK- PARCEL AND STREAMS

BAYSIDE CREEKS



114 S. Washington St.  
Suite 301  
Easton, MD 21601  
443.385.0511  
info@shorerivers.org

Legend

- STREAMS
  - FLOWPATHS
  - ▭ PARCELS
- SLOPE  
PERCENT
- 0.001 - 15
  - 15.001 - 35
  - 35.001 - 55
  - 55.001 - 75
  - 75.001 - 599.309
- HEIGHT ABOVE CHANNEL  
METERS
- Channel
  - lt\_1\_5m
  - 1\_5to3m
  - 3to5m
  - gt\_5m

ANALYZED  
TIMOTHY ROSEN 11/08/21

CHECKED  
---

DATE:  
1/10/2022

0 500 1,000 2,000 Feet